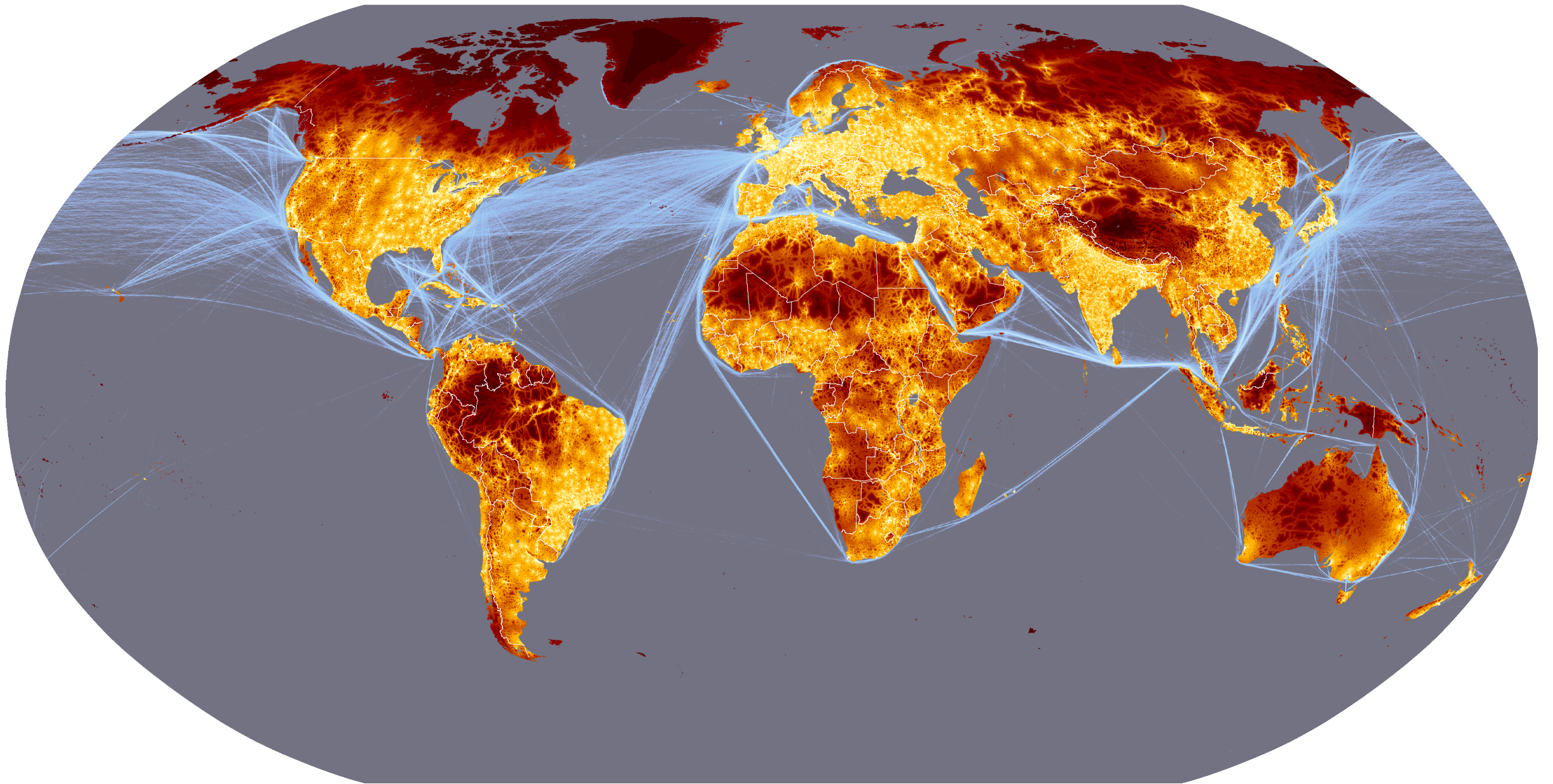




USING URBAN AGRICULTURE TO CULTIVATE STUDENT SUCCESS



DENSE URBAN ENVIRONMENT



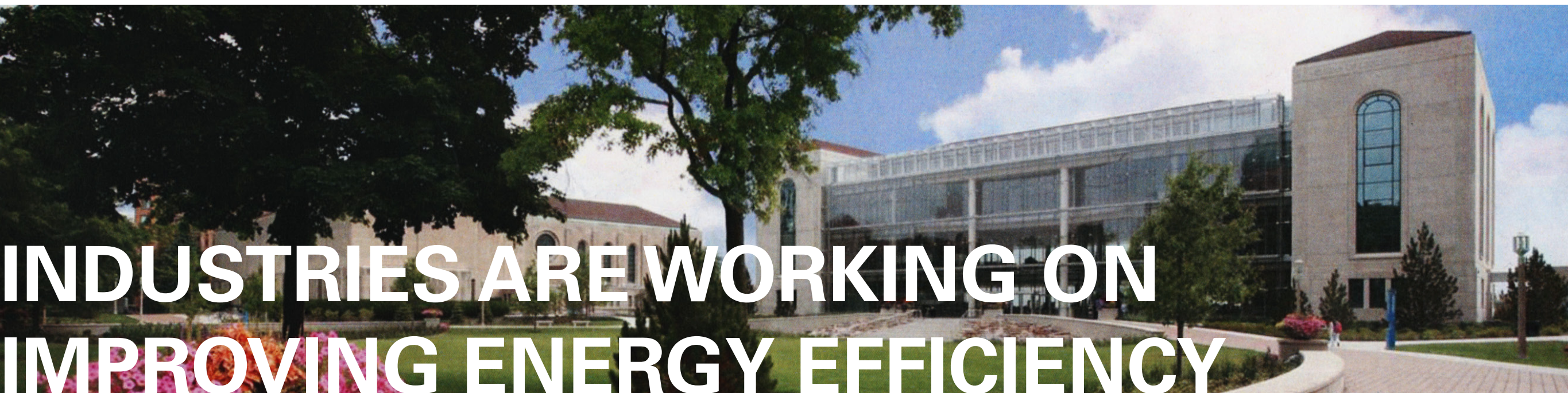
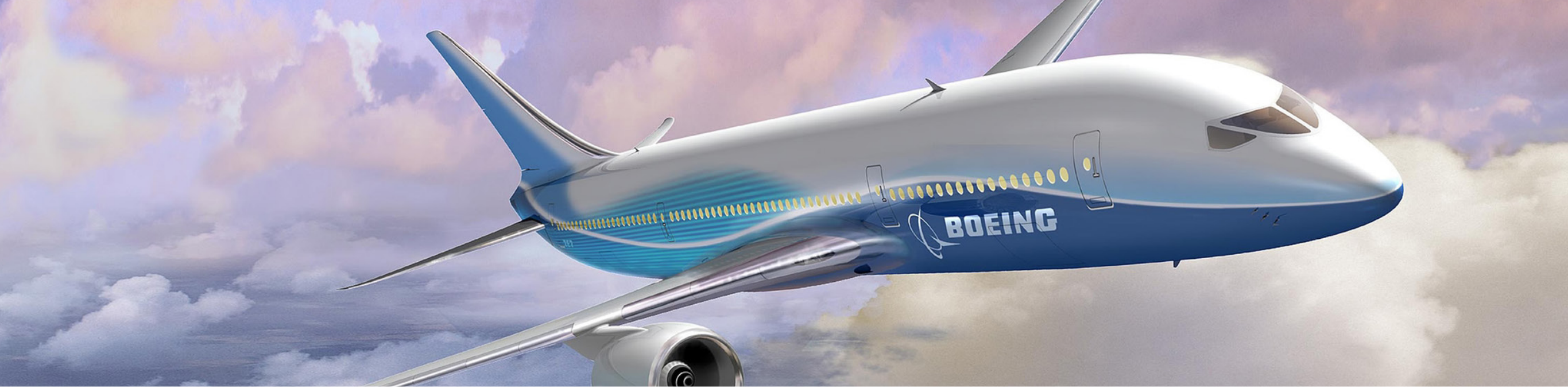
AVERAGE DISTANCE PRODUCE
TRAVELS TO YOUR TABLE **1500 MILES**



**CHEAP TRANSPORTATION
INDUSTRIALIZED FOOD PRODUCTION
MIGRATION OF RURAL POPULATION
TO CITIES**



**OUR CULTURE DEMANDS FRESH
BLUEBERRIES IN WINTER**



**INDUSTRIES ARE WORKING ON
IMPROVING ENERGY EFFICIENCY**



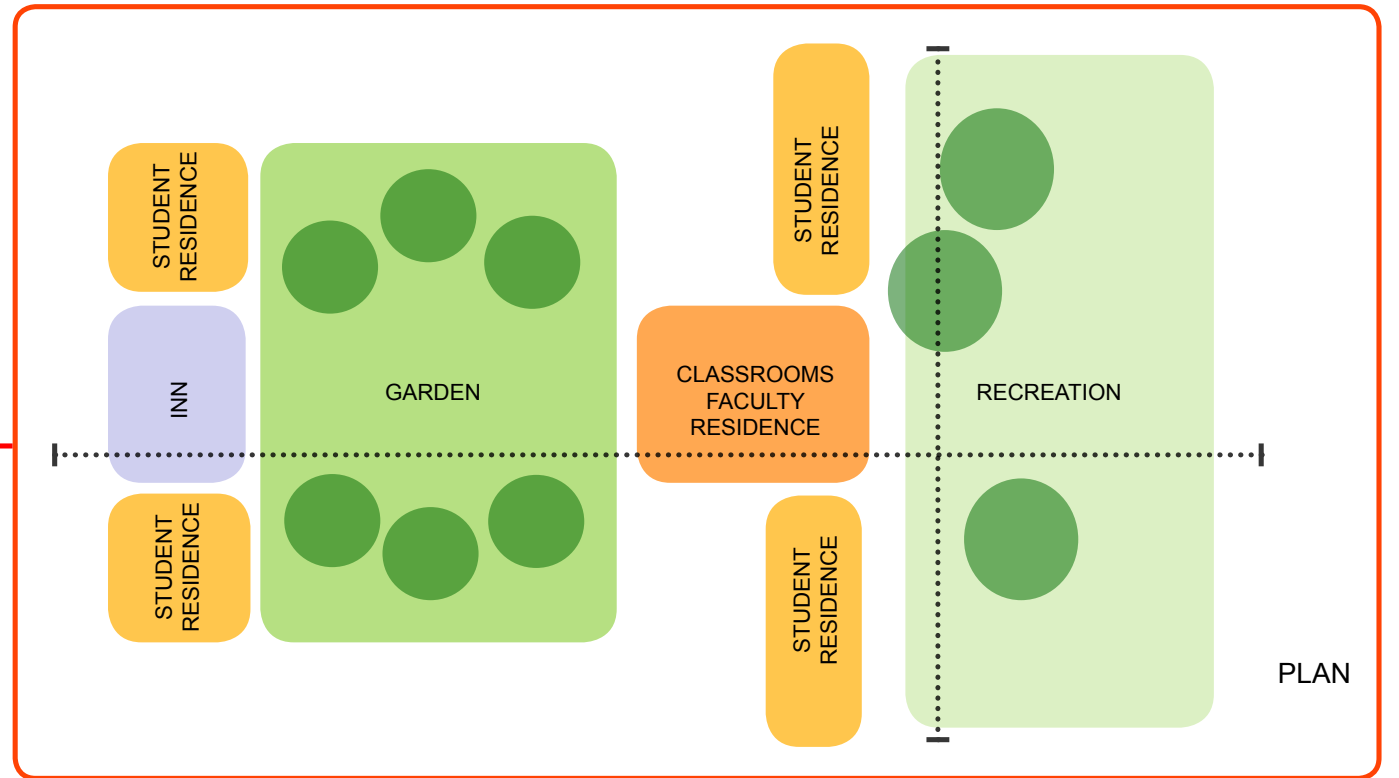
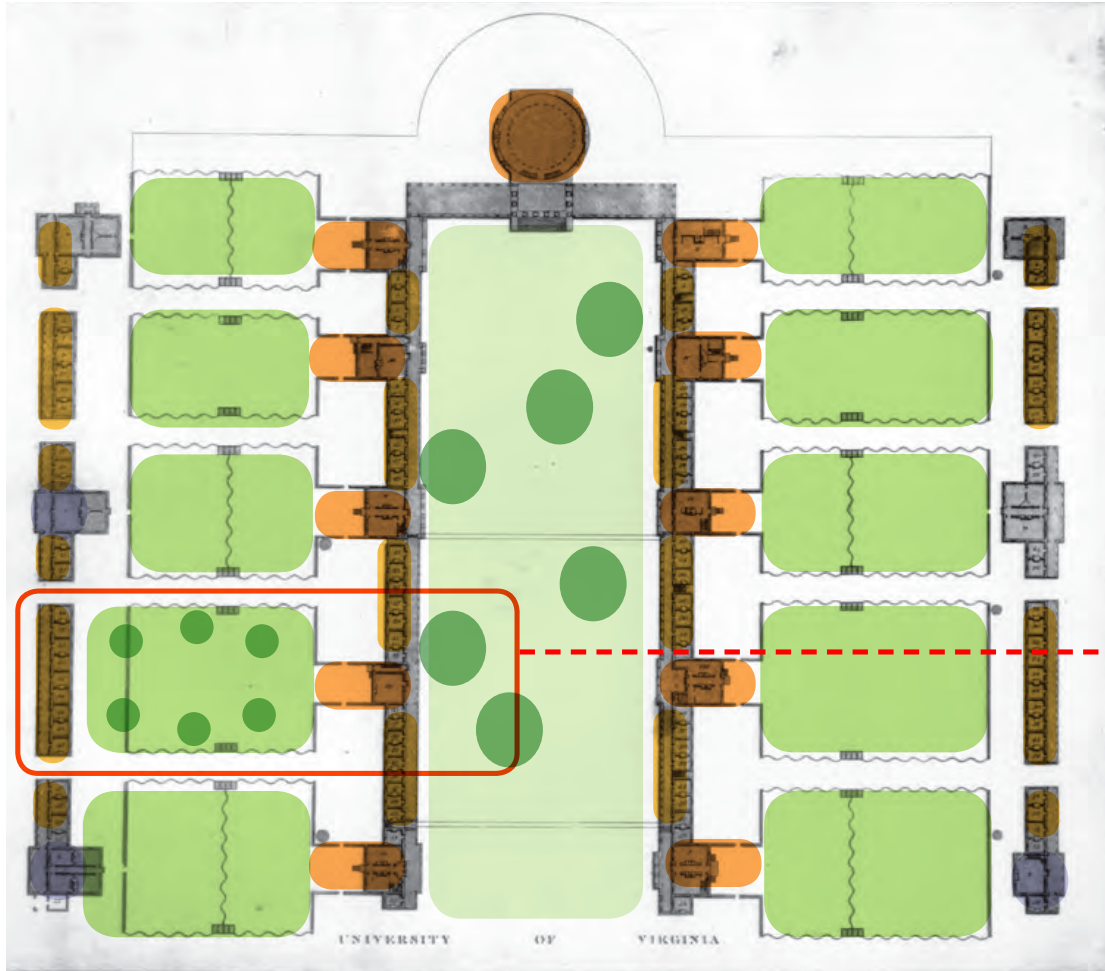
WHAT IS FOOD DOING?



**URBAN AG IS MOVING PEOPLE
CLOSER TO THEIR FOOD SOURCE**



**JEFFERSON IMAGINED A
DEMOCRATIC UNIVERSITY
BASED ON AGRARIAN CULTURE**





LOYOLA UNIVERSITY WANTS TO TEACH
A CONSERVATION ETHIC

An aerial architectural rendering of a modern urban development. The scene features several multi-story buildings with a mix of brick and glass facades. A prominent feature is a large, curved glass-enclosed structure, possibly a greenhouse or a covered walkway, situated in the center. The buildings are interspersed with green spaces, including lawns, trees, and a small stream or water feature. The overall design emphasizes sustainability and integration of nature into the urban environment. The text "CENTER FOR SUSTAINABLE URBAN LIVING INTEGRATES LIVING, LEARNING AND EXPERIENTIAL LEARNING" is overlaid in large, white, sans-serif capital letters across the bottom half of the image.

CENTER FOR SUSTAINABLE URBAN
LIVING INTEGRATES LIVING,
LEARNING AND EXPERIENTIAL
LEARNING



FOCUSED ON URBAN AG



URBAN AG SOLD IN CAFE

THE EXISTING BUILDING USES **14 kBtu/ft²/a**

W/ IMPROVED ENVELOPE **11 kBtu/ft²/a**

A TYPICAL LAB BUILDING USES **270 kBtu/ft²/a**

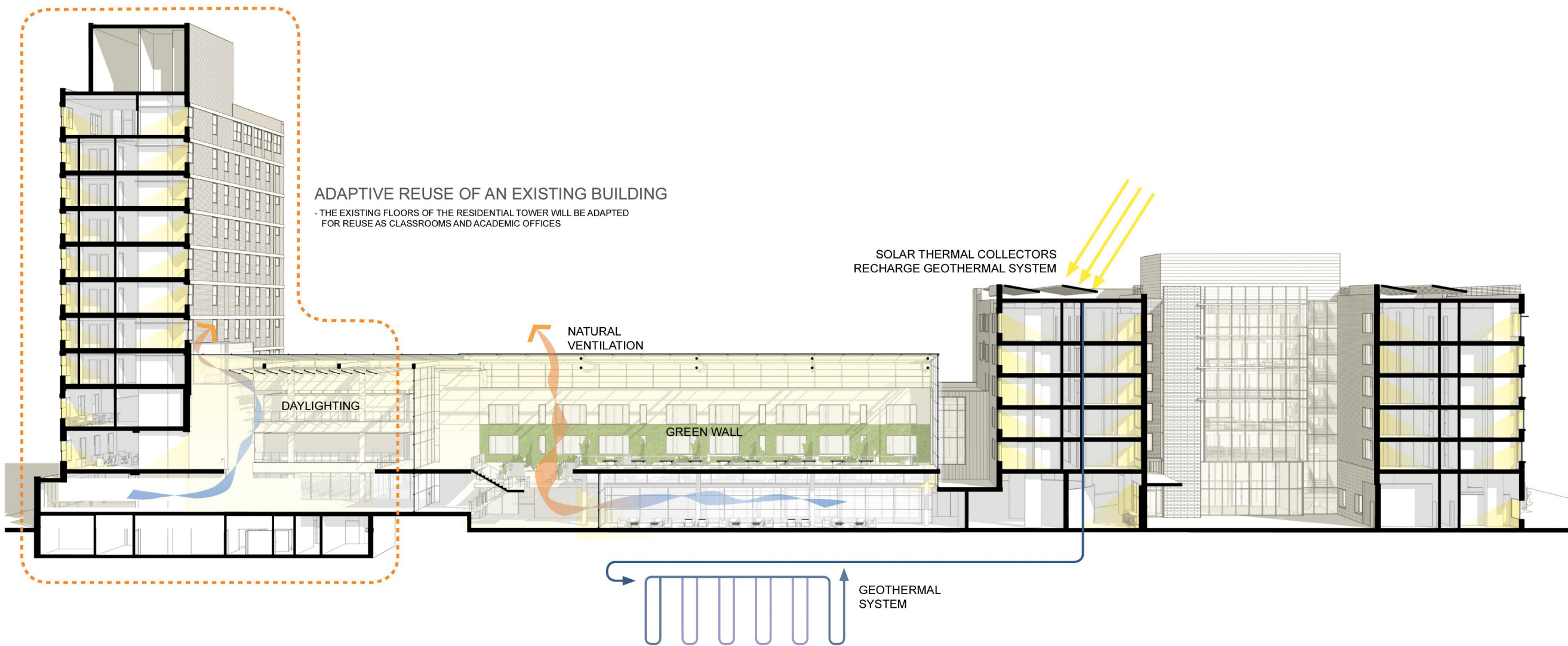
THE CSUL LABS WILL USE **80 kBtu/ft²/a**

- ACADEMIC OFFICES
- CLASSROOMS
- RESEARCH LABORATORIES
- DORMITORY

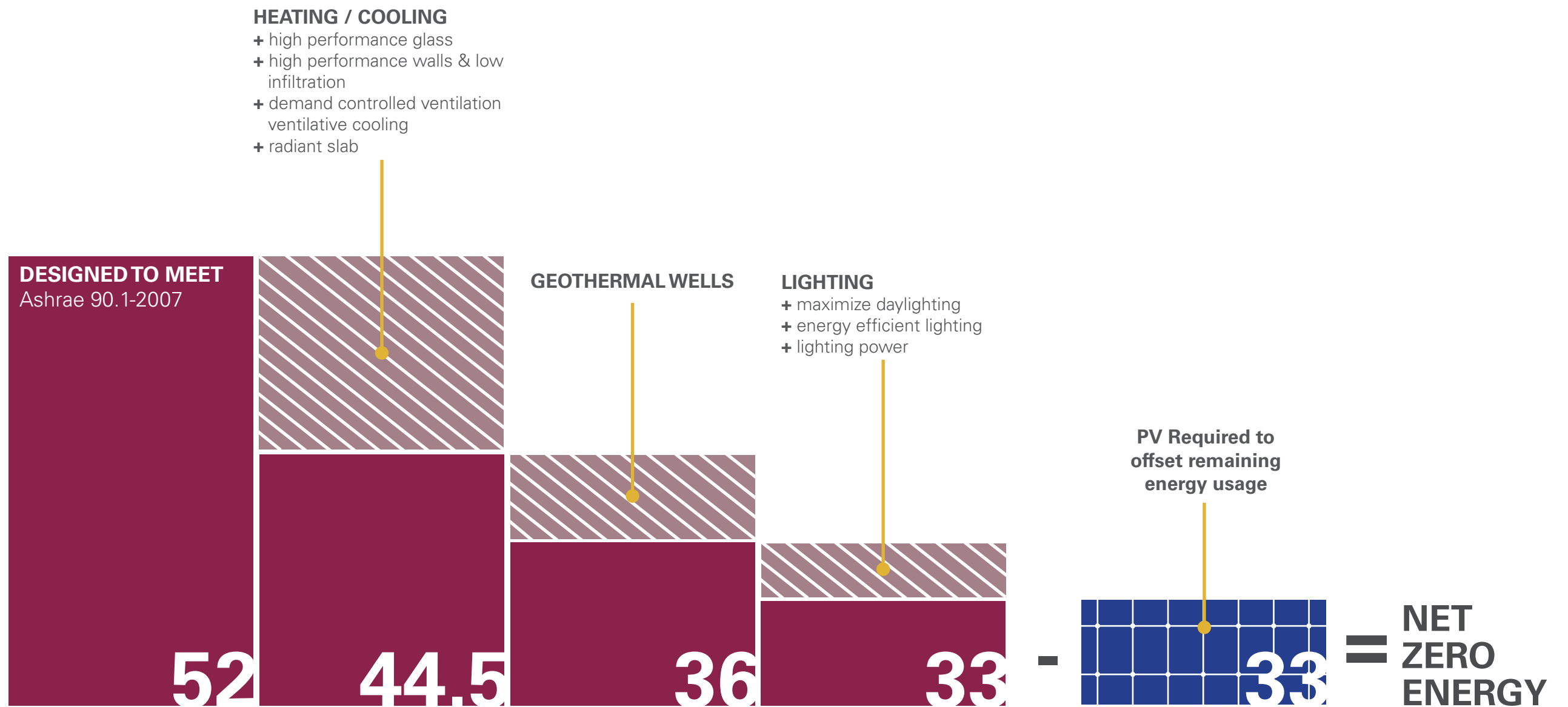
BUILDING SYSTEM INTEGRATION

- BUILDING SYSTEMS ARE INTEGRATED ACROSS DIFFERENT TYPES OF USES, REDUCING ENERGY CONSUMPTION BELOW THE TYPICAL LEVEL OF A SIMILAR SINGLE-USE BUILDING.

258,000SF @ \$191/SF



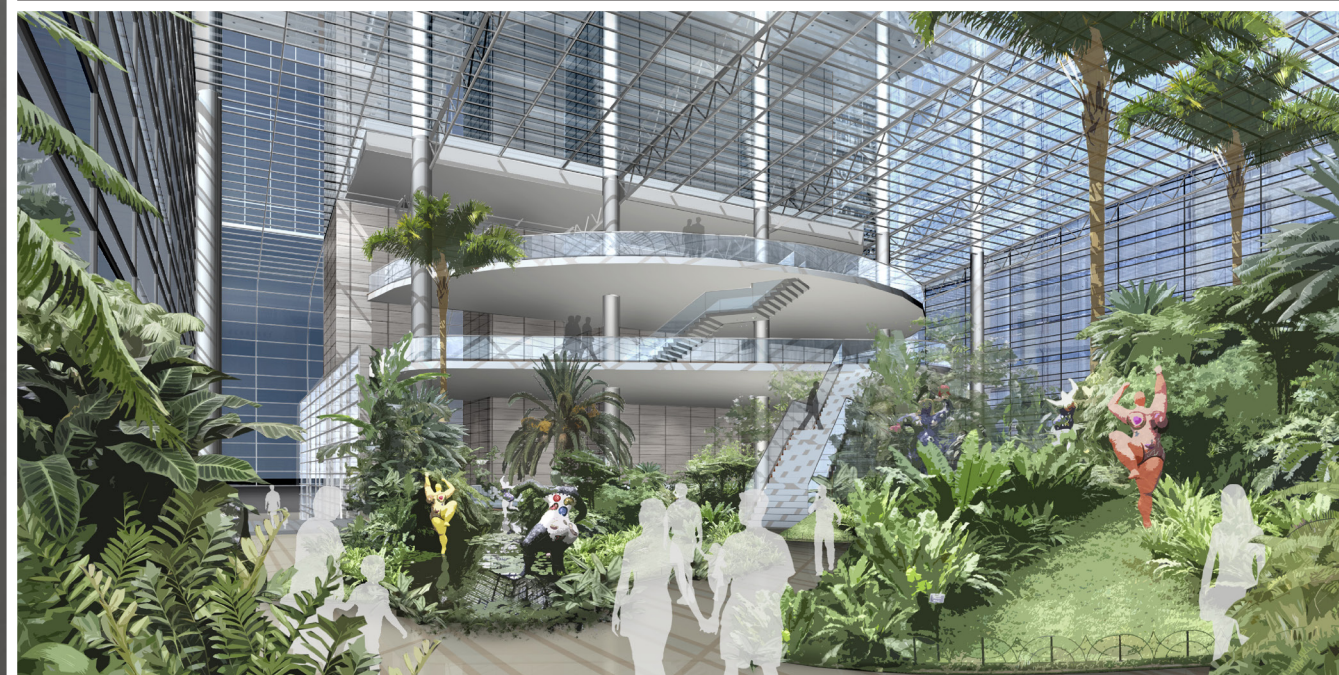
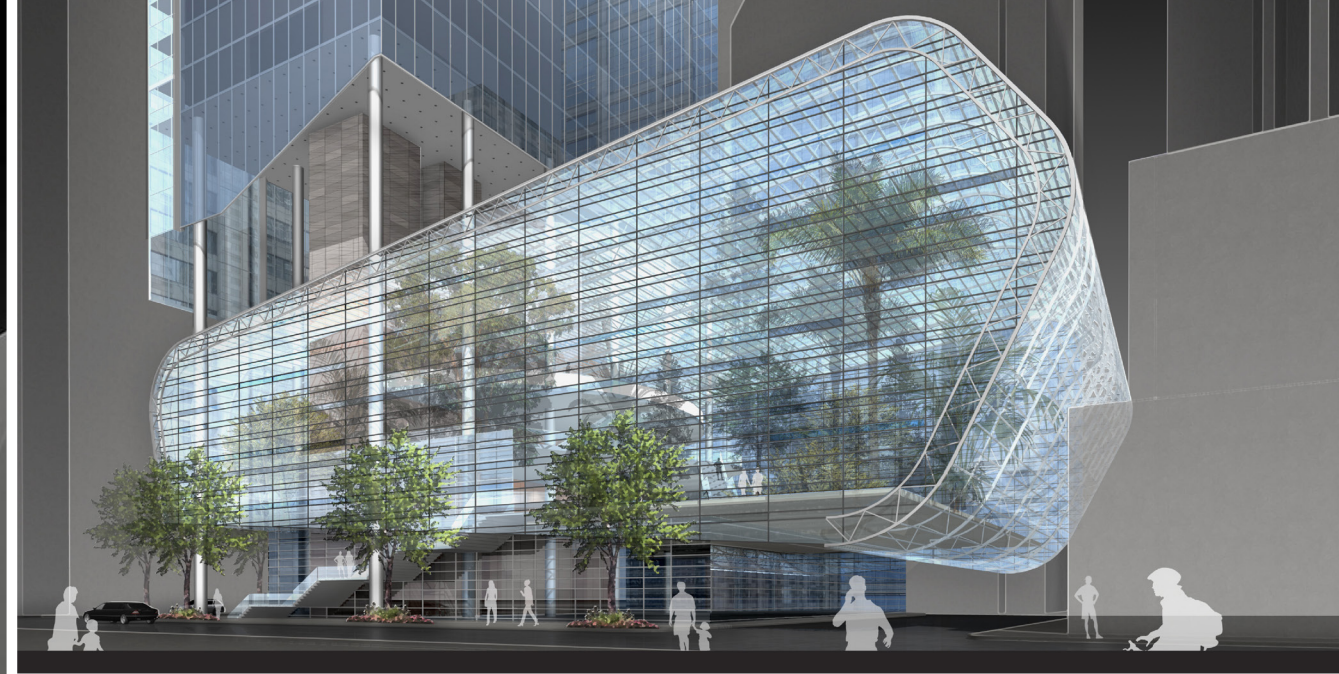
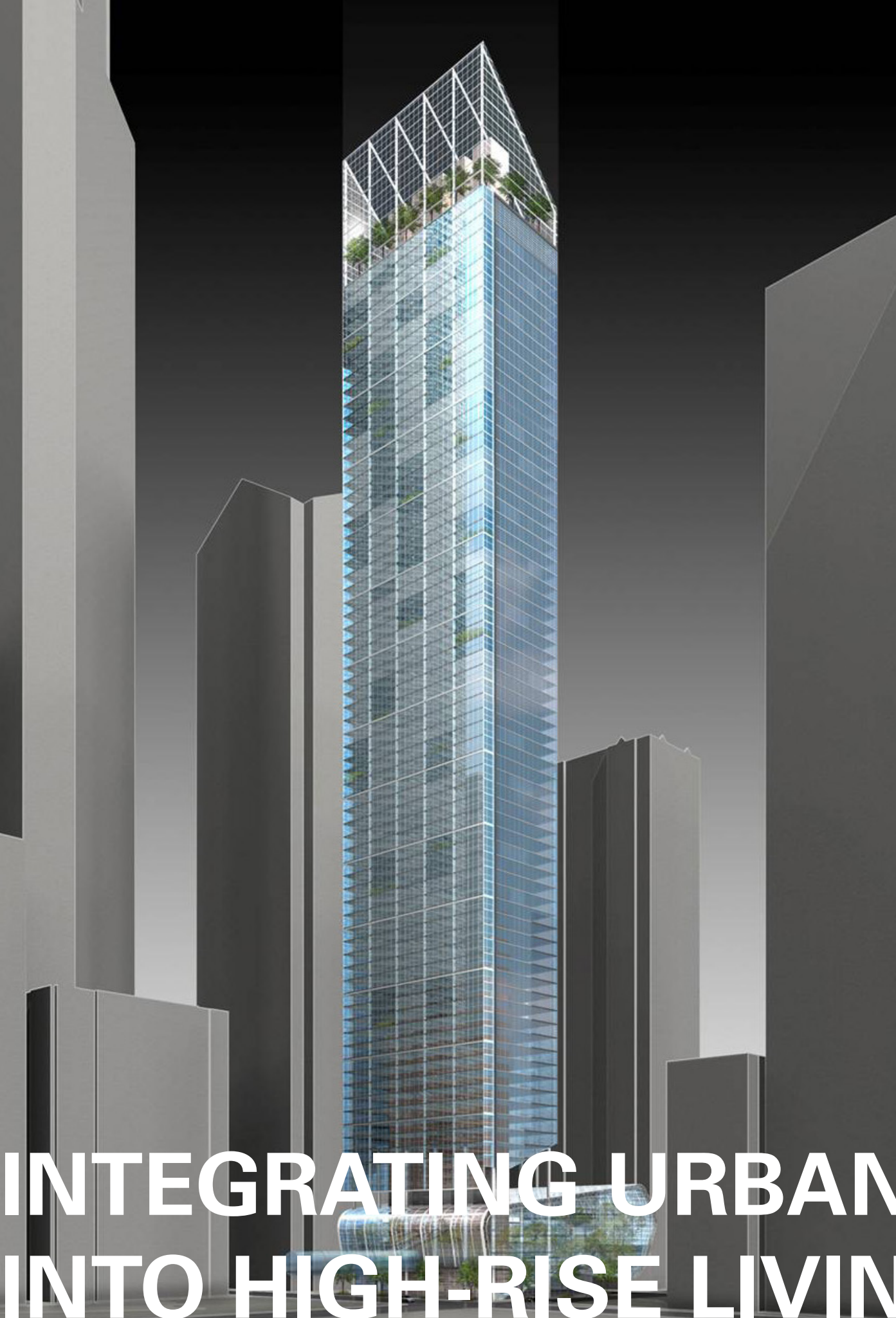
33 KBTU'S



BUILDING EUI

energy use intensity: energy consumption per floor area

THE PATH TO NET ZERO ENERGY



INTEGRATING URBAN AG
INTO HIGH-RISE LIVING



THANK YOU